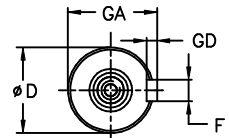
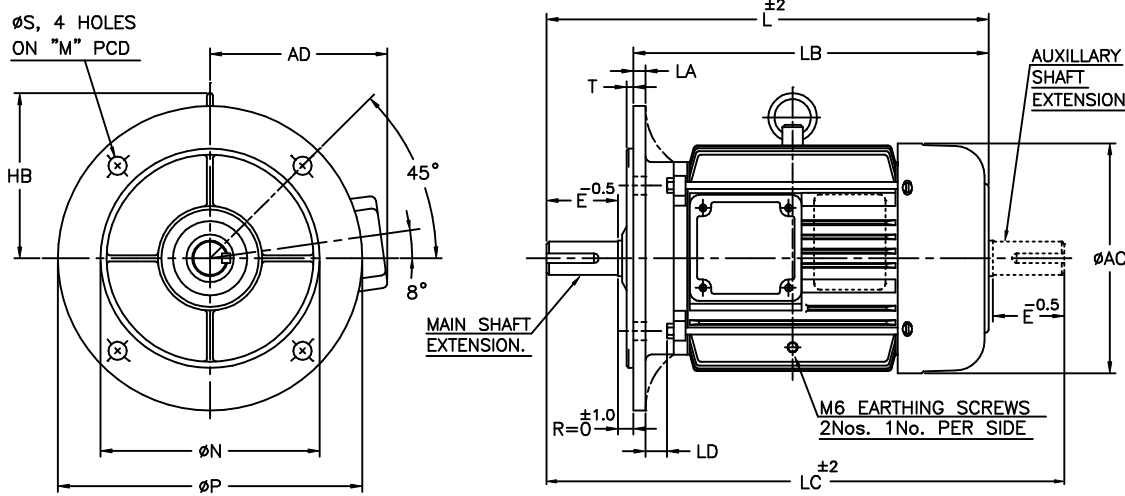


UNMENTIONED TOLERANCES

LINEAR DIMENSIONS (SUPTO MACHINED) / TOL.	ABOVE 0	6	315	1000
ANGLES		± 0.2	± 0.5	± 0.8

ALL INFORMATION CONTAINED IN THIS DOCUMENT IS CONFIDENTIAL AND THE PROPERTY OF KIRLOSKAR ELECTRIC CO.LTD. REPRODUCING OF THESE IN ANY FORM IS TO BE DONE WITH THE SPECIFIC PERMISSION OF THE COMPANY.

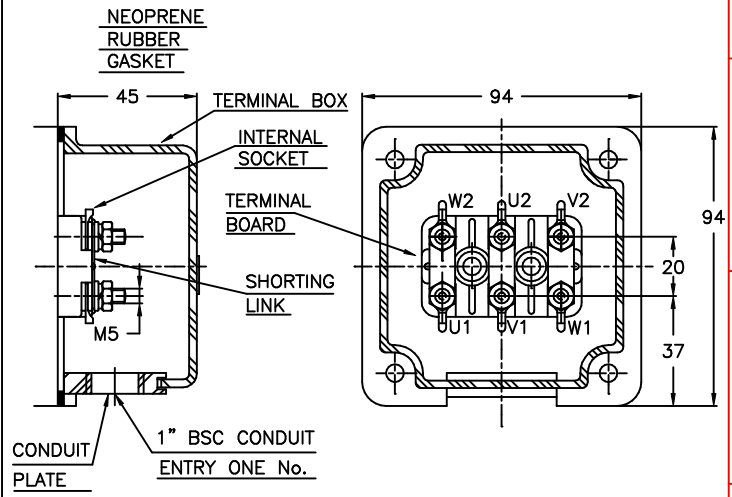
DIMENSIONAL DRAWING



- NOTE :**
1. DIMENSIONS ARE AS PER IS:1231 & 2223
 2. DEGREE OF PROTECTION: IP:55.
 3. TOLERANCE ON 'd' : k6. TOLERANCE ON 'N' : j6.
 4. PROTECTED CENTRE HOLE AT SHAFT EXTENSION AS PER IS:2540. "M12 X 28" FOR 'D'- Ø38
 5. TERMINAL BOX CAN BE ROTATABLE THROUGH 360° IN STEPS OF 90°.
 6. KEY & KEYWAY ARE AS PER IS:2048 & TOLERANCE ON KEYWAY IS P9.

DETAILS OF MAIN & AUXILIARY SHAFT EXTENSION

TERMINAL BOX ARRANGEMENT



NOTE: MAX. CABLE SIZE : MAIN-1x3Cx16 sqmm.

SL. NO.	FRAME	D	E	F	L	LC	M	N	P	S	T	AC	AD	GA	GD	LA	LB	LD	HB
1	BPM 132S	38	80	10	442	526	265	230	300	15	4	260	180	41	8	12	362	24	176
2	BPM 132M				480	564											400		

Z122620100JR

SURFACE ROUGHNESS (MAX) AS PER KSD-02-027

RM	50	12.5	25	1.6	3.2	6.3	0.2	0.4	0.8	0.025	0.05	0.1
OLD	✓	✓	✓	✓	✓	✓	✓	✓	✓	✓	✓	✓
NEW	✓	✓	✓	✓	✓	✓	✓	✓	✓	✓	✓	✓

UC: CHAM: UNMENTIONED

REV.	1	ZONE	-	DCN.No.	0122209	BRIEF RECORD	REDRAWN IN A NEW FORMAT.	Sd/-	10/01/09	QA MARKETING PRODUCTION	PRINTS ISSUED TO
8	7	6	5								

THIS SUPERSEDES FROM dt AS PER DCN No.....
 THIS SUPERSEDED BY FROM dt AS PER DCN No.....

MATERIAL SPECIFICATION	RAW MATERIAL SIZE	WEIGHT kg	SCALE			
-	-	RM FIN.	NTS			
CASTING/FAB REF. USED ON		No.P.S.:-	REDRAWN	CHECKED	STANDARD	APPROVED
BPM132		sd/-	sd/-	sd/-	sd/-	
TITLE:		dt:10/01/09	dt:10/01/09	dt:10/01/09	dt:10/01/09	
DIMENSION SHEET		SHEET ONE OF ONE		32262098R1		

KIRLOSKAR ELECTRIC COMPANY LTD. HUBLI-580030 (INDIA)

FORM No. 02 201 02B (ISSUE 7)